

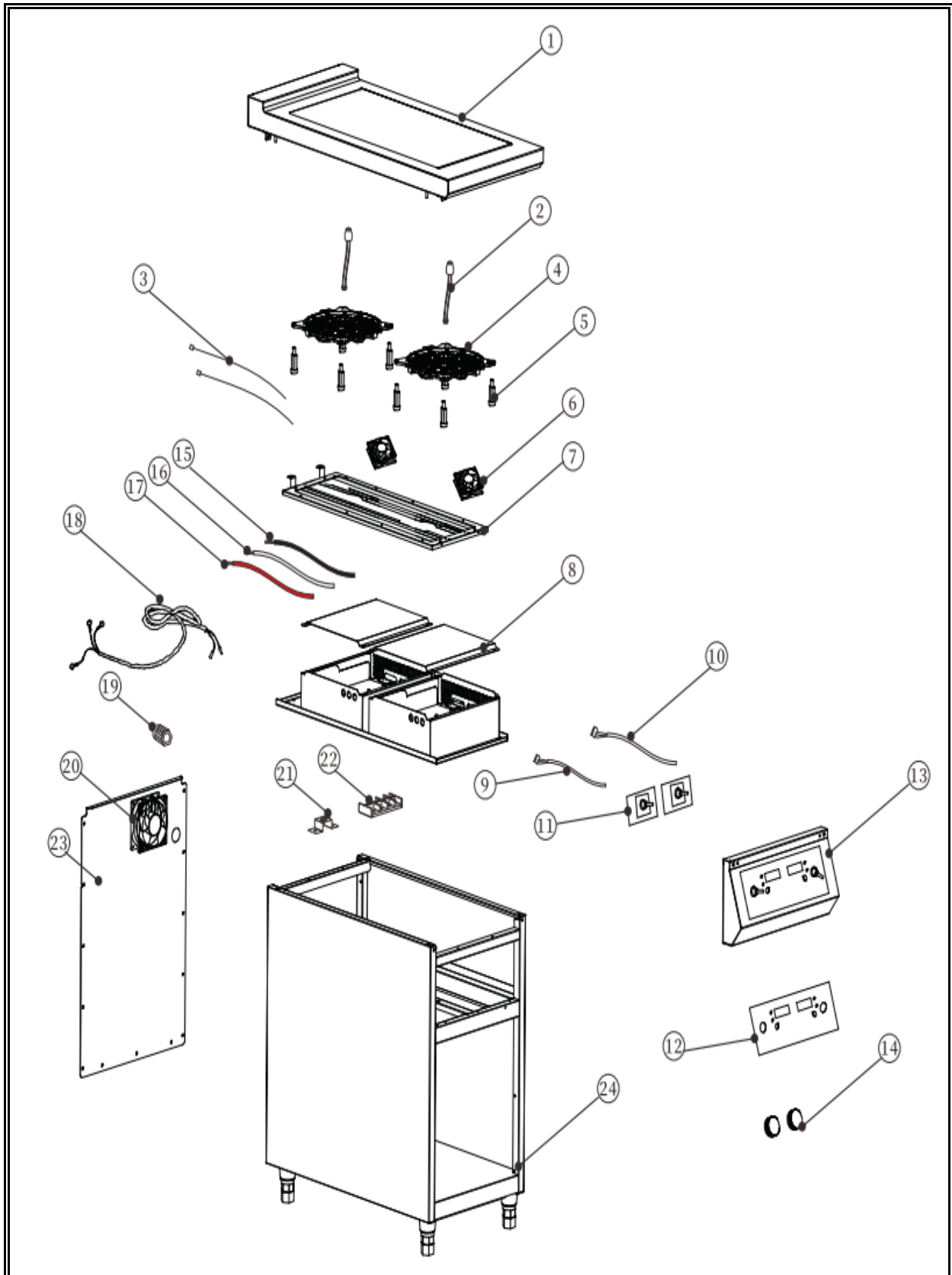


***7505.0005***

Onderdelen informatie  
Erzatzteil information  
Spare part information  
Information de pièces







POS:	Art.No.:	Omschrijving:	Aantal:
1	CS9806.0222	Top cover(including glass)	
2	CS9806.0200	Sensor	
3	CS9806.0210	Sensor 8-A	
4	CS9806.0202	3500W heating coil	
5		Holding for heating coil	
6	CS9806.0204	9025 fan	
7		Iron support for heating coil	
8	CS9806.0220	PCB BOX	
9		700mm connect cable for control panel	
10		1100mm connect cable for control panel	
11	CS9806.0230	Control panel	
12		Control glass	
13		Control panel metal box	
14	CS9806.0208	Knob	
15		Black cable for mainboard	
16		White cable for mainboard	
17		Red cable for mainboard	
18		Plug cord	
19		Fix for plug cord	
20	CS9806.0212	12038 fan	
21	CS9806.0214	Temperature controller	
22		Patch board for plug cord	
23		Iron back plate	
24		Stainless steel housing	