

ecofrost

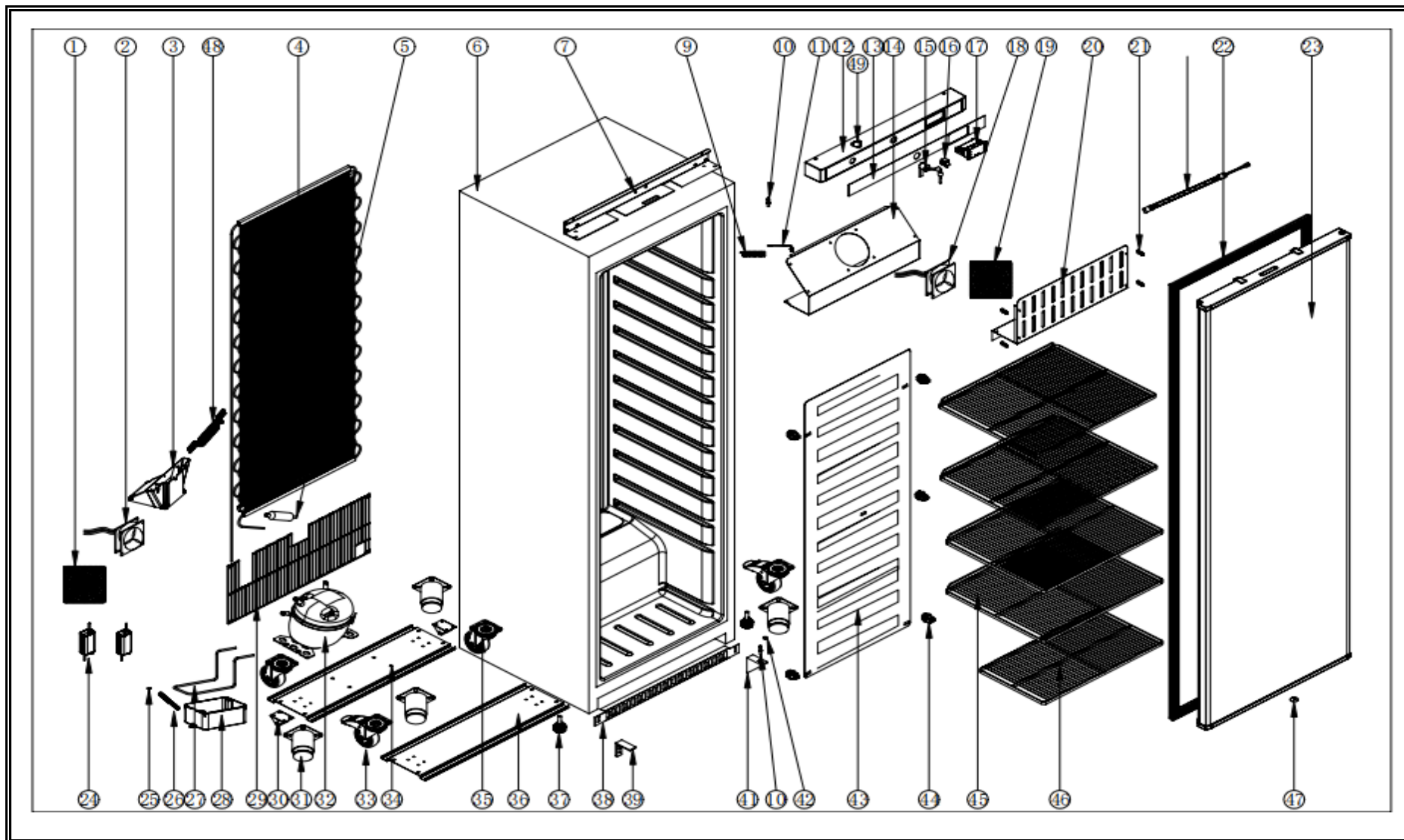
7063.0045

v1.0

Onderdelen informatie
Erzatzteil information
Spare part information
Information de pièces







POS:	Art.No.:	Omschrijving:	Aantal:
1		Net cover	1
2	CS9338.8032	Condenser fan	1
3		Condenser fan cover	1
4		Condenser	1
5		Dry filter	1
6A		Body	1
6B		Body	1
7		Control panel bracket	1
9		Probe fixing cover	1
10	CS9338.8026	Hinge axis/pivot	2
11	CS9338.8014	Senser/Probe/Thermistor	1
12	CS9338.8046	Control panel	1
13	CS9338.8046	Control panel label	1
14		Evaporator fan baffle	1
15	CS9338.8008	Lock with 2 keys	1
16	CS9338.8002	Door switch	1
17	CS9338.8004	Thermostat DT-02	1
18	CS9338.8032	Condenser fan	1
19		Evaporator fan net cover	1
20		Front baffle for evaporator fan	1
21		Cover for M5 round head screw	4
22	CS9338.8030	Door gasket	1
23A		Foamed door-SS	1
23B		Foamed door- white PCM	1
24	CS9338.8036	Switching power supply	2
25		Hose clamp	1
26		Water/outlet pipe(white)	0,5
27		Evaporating water connecting pipe	1
28	CS9338.8038	Water tray	1
29		Engine room grid	1
30		Rollers	2
31		201# SS feet	4
32		Compressor	1
33		Big castor(with brake)	2
34		Bottom plate of compressor	1
35		Big castor(without brake)	2
36		Bottom plate	1
37	CS9338.8006	Feet	2
38A	CS9338.8054	Bottom panel-SS	1
38B	CS9338.8056	Bottom panel-white	1
39A	CS9338.8048	Door support for SS unit	1
39B	CS9338.8042	Door support for white unit	1
41	CS9338.8044	Right down hinge	1
42	CS9338.8022	Nylon washer	1



Onderdelenlijst 7063.0045

POS:	Art.No.:	Omschrijving:	Aantal:
43	CS9338.8060	Evaporator	1
44		Evaporator fastener	5
45	CS7063.9010	Upper shelf	4
46		Bottom shelf	1
47	CS9338.8028	Foaming hole cover for door	1
48		Air guide net for condenser fan	1

The logo for 'ecofrost' features the word 'eco' in a medium blue font and 'frost' in a dark blue font. Above the 'o' in 'eco' is a stylized graphic consisting of a light blue arc and a dark blue four-pointed star.

ecofrost

7063.0045

Combisteel BV

Lichtschip 63
3991CP Houten
The Netherlands

+31 (0)30 285 00 90
info@combisteel.com
www.combisteel.com