

MOD : WR-DR12-S2

Production code : RC120

 *Instruction manual*

RC 120 / RC 160
RH 120 / RH 160

Table of Contents

General Information.....	3~4
Safety.....	5~6
Intended use(for RH).....	6
Intended use(for RC).....	7
Transport, packaging and storage.....	7~8
Technical data(for RH).....	8~13
Technical data(for RC).....	14~20
Waste disposal.....	21

Introduction

Dear Customer:

We congratulate you on your purchase of one of the many appliances created for the commercial refrigeration industry.

Like all of our products, this product has been developed on the basis of the latest technology and produced using reliable commercial grade refrigeration and electrical components that have proven records of reliability throughout our industry.

Please take a few minutes to read this manual prior to putting into service your new appliance. Save these instructions in a safe place for further reference to its operation, service and spare parts advice for your technician.

We hope you are pleased with your new acquisition and it serves you for many years to come.

General Information

1.1 Information about the instruction manual

This instruction manual contains information about the installation, operation and maintenance of the device and should be consulted as an important source of information and reference guide.

Awareness of the safety instructions and instructions for use in this manual will ensure the safe and correct use of the device.

In addition to the information given here, you should comply with any local Health and safety Controls and generally applicable safety regulations.

The instruction manual forms part of the product and should be kept near the device and easily accessible for anyone carrying out the installation, servicing, maintenance or cleaning.

1.2 Key to symbols

In this manual, symbols are used to highlight important safety instructions and any advice relating to the device. The instructions should be followed very carefully to avoid any risk of accident, personal injury or material damage.



WARNING!

This symbol highlights hazards, which could lead to injury. Please follow the instructions very carefully and proceed with particular attention in these cases.



WARNING! Electrical hazard!

This symbol draws attention to potential electrical hazards. If you do not follow the safety instructions, you may risk injury or death.



CAUTION!

This symbol highlights instructions, which should be followed to avoid any risk of damage, malfunctioning and/or breakdown of the device.



NOTE!

This symbol highlights tips and information, which have to be followed for an efficient and trouble-free operation of the device.



WARNING! Hot surface!

This symbol is a warning that the device surface is hot when in use. Ignoring this warning may result in burns!

General Information

GB

1.3 Liability and Warrantees

All the information and instructions in this manual take into account standard safety regulations, current levels of technical engineering as well as the expertise and experience we have developed over the years.

The instruction manual was translated with all due care and attention. However, we do not accept liability for any translation errors. The German version of this instruction manual is definitive.

If the delivery consists of a special model, the actual scope of delivery may differ from the descriptions and illustrations in this manual. This is also the case for special orders or when the device has been modified in line with new technology. If you have any questions, you should contact the manufacturer.

NOTE!

Read the instruction manual carefully before using the device. The manufacturer does not accept liability for any damage or malfunction resulting from not following the instructions for use.

The instruction manual should be kept near the device, easily accessible for anyone wishing to work with or using it. We reserve the right to make technical changes for purposes of developing and improving the useful properties.

1.4 Copyright protection

The instruction manual including any texts, drawings, images or other illustrations is copyright. No part of this publication may be reproduced, transmitted or used in any form or by any means without permission in writing from the manufacturer. Any person who commits any unauthorized act in relation to this publication shall be liable to claims for damages. All rights reserved.

NOTE!

The contents, texts, drawings, pictures and any other illustrations are copyright and subject to other protection rights. Any person unlawfully using this publication is liable to criminal prosecution.

1.5 Declaration of conformity

The device complies with the current standards and directives of the EU.

We certify this in the EC declaration of conformity.

If required we will be glad to send you the according declaration of conformity.

This section provides an overview of all important safety aspects. In addition every chapter provides precise safety advice for the prevention of dangers which are highlighted by the use of the above mentioned symbols.

Furthermore, attention should be paid to all pictograms, markers and labels on the device, which must be kept in a permanent state of legibility.

By following all the important safety advice you gain an optimal protection against all hazards as well as the assurance of a safe and trouble-free operation.

2.1 General information

This device is designed in accordance with the presently applicable technological standards. However, the device can pose a danger if handled improperly and inappropriately.

Knowing the contents of the instruction manual as well as avoiding mistakes and thus operating this device safely and in a fault-free manner is very essential to protect yourselves from the hazards.

To prevent hazards and to ensure optimum efficiency, no modifications or alterations to the device that are not explicitly approved by the manufacturer may be undertaken.

This device may only be operated in technically proper and safe condition.

2.2 Safety instructions for use of the device

The specifications regarding the industrial safety are based on the Regulations of the European Union applicable at the time of manufacturing the device.

Safety

If the device is used commercially, the user is obliged to ensure that the said industrial safety measures concur with the state of the rules and regulations applicable at the time in question for the entire period of use of the device and to comply with the new specifications.

Outside the European Union, the industrial safety laws applicable at the place of installation of the device and the regional territorial provisions must be complied with.

Besides the industrial safety instructions in the instruction manual, the general safety and accident prevention regulations as well as environment protection regulations applicable for area of application of the device must be followed and complied with.

Intended Use(for RH)

- The device can be used by children 8 years and up, as well as by people with disabilities and those with limited experience/knowledge as long as they are under supervision or have been instructed on proper use of the device and its possible dangers.
- Children should not play with the device.
- Cleaning and maintenance cannot be performed by children younger than 8 years old and must be done under supervision.
- Children under the age of 8 years old must be kept away from the device and its power cord.
- Please keep these instructions and give them to future owners of the device.
- All people using the device should follow the instructions and tips contained in these instructions.
- Only use the device indoors.

Safe operation is only guaranteed when using the device for its intended purpose.

Any technical interventions, as well as assembly and maintenance are to be made by a qualified customer service only.

The **hot counter** is designed **only** to **keep warm appropriate food** types.

Do **not** use the **hot counter** for:

- warming up of liquids containing sugar, sweeteners, acids, alkalis or alcohol;
- warming up and heating of inflammable, noxious, easily volatilizing or similar liquids or substances.

Any use going beyond the intended purpose and/or any different use of the device is forbidden and is not considered as conventional.

Any claims against the manufacturer or his authorized representative as a consequence of experiencing damages resulting from unconventional use are impossible.

The operator is liable for all damages resulting from inappropriate use.

Intended Use(for RC)

- The unit is not intended for use by individuals (including children) with physical or mental disabilities, insufficient experience, and/or insufficient knowledge unless such persons are under the care of a person responsible for their safety or have received instructions regarding appropriate use of the unit.
- Children should be observed to ensure that they are not playing with the unit.
- Preserve this manual safely. When passing on/selling the device to a third party, the manuals must be handed over along with the device.
- Every person using the device must act in accordance to the manuals and under consideration of the safety advice.
- The device is to be used indoors only.

This device has been designed and built for commercial use only and should be operated by qualified personnel only.

Safe operation is only guaranteed when using the device for its intended purpose.

Any technical interventions, as well as assembly and maintenance are to be made by a qualified customer service only.

The refrigerated showcase is only intended for cooling beverages and food products.

Do not use the refrigerated showcase for:

- Storage of flammable materials such as ether, kerosine or glue;
- Storage of pharmaceutical products and blood products (i.e. Intended for transfusion).

Any use going beyond the intended purpose and/or any different use of the device is forbidden and is not considered as conventional.

Any claims against the manufacturer or his authorized representative as a consequence of experiencing damages resulting from unconventional use are impossible.

The operator is liable for all damages resulting from inappropriate use.

The intended/conventional/appropriate usage includes the observance of installation-, operation-, maintenance- and cleaning instructions.

Transport, packaging and storage

3.1 Delivery check

Please check the delivery upon completeness and transport damage immediately after receipt.

In case of visible damage do not accept or accept the delivery with reservation only.

Note the extent of damage on the carrier's bill of delivery. Trigger off the complaint.

Hidden damages should be reclaimed immediately after notice, as claims for damages can only be asserted within the effective period for complaints.

3.2 Packaging

Please do not throw away the covering carton of your device as it might be useful for storage purposes, when moving or, in case of damages, when the device must be sent back to a repair center. The outer and inner packing material should be removed completely from the device before installation.

If you liked to dispose the packing, consider the regulations applicable in your country. Supply re-usable packing materials to the recycling.

Please inspect the device upon completeness. In case any part is missing please contact our customer service center immediately.

Transport, packaging and storage

3.3 Storage

Keep the package closed until installation and under consideration of the outside indicated positioning- and storage markings.

Packages should be stored under consideration of the following:

- Do not store outdoors.
- Keep it dry and dust-free.
- Do not expose it to aggressive media.
- Do not expose it to direct sunlight.
- Avoid mechanical shocks and vibration.
- In case of longer storage (> 3 months) make sure you check the state of the packaging and the parts regularly. If required refresh or renew.

Technical Data(for RH)

4.1 Technical specification

Model	RH 120	RH 160
Climate Class	4	4
Temp. range	30-90 °C	30-90 °C
Input power	1100W	1500W
Rated current	5.0A	6.0A
Rated frequency	50Hz	50Hz
Rated voltage	220-240V	220-240V
External dimension	678x568x670	856x568x670
Net capacity	120L	160L
Net/Gross weight	48/50Kg	56/58Kg

We reserve the right to make technical changes!

Design:

- Straight front glass, safety glass
- Operation side with sliding doors for easy filling with foods
- Thermostatic control
- Water container for air moistening
- Halogen lighting

The ideal supplement: Gastronomic containers 18/10 made of chrome nickes steel

- 2/1 GN, 20mm deep(Item No. A120020) or
- 2/1 GN, 40mm deep(Item No. A120040)

Technical Data(for RH)

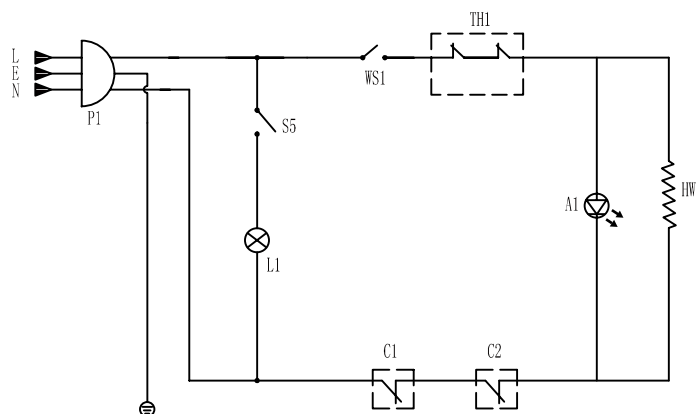
4.2 Overview of parts



- ① Sliding glass doors on operation side
- ② Straight front glass
- ③ Intermediate shelf
- ④ Housing
- ⑤ Height adjustment feet
- ⑥ Storage area for GN containers
- ⑦ Halogen lighting

4.3 Circuit diagram

P1	POWER PLUG
S5	LAMP SWITCH
WS1	WARM SWITCH
TH1	THERMOSTAT
A1	INDICATOR LAMP
C1	CONTROLLER 150°C
C2	CONTROLLER 125°C
HW	HEATING ELEMENT



Technical Data(for RH)

5. Installation and operation

5.1 Safety instructions



WARNING! Risk of electric shock!

The device must only be connected to a properly installed single socket with protective contact. Never remove the power cable by pulling the cable itself; always grab the plug housing.

- Never allow the power cable to come into contact with heat sources or sharp edges. The power cable should not hang over the side of the working surface. Ensure that no one can step on or trip over the cable.
- The power cable must not be folded, bent or tangled, and must always remain fully unrolled.
- Never place the device or other objects on the power cable.
- Do not lay the cable over carpets or heat insulations. Do not cover the cable. Keep away the cable from operating range and do not dunk it into water.
- Do not use any accessory or spare parts that have not been recommended by the manufacturer. These can be dangerous for the user or lead to damages of the device or personal injury, and further, the warranty expires.
- Do not move or tilt the device when in operation.
- **Never** use the device with wet or moist hands.
- **Never** leave the device unattended when in use.



WARNING! Hazard via electrical current!

The device can cause injuries due to improper installation!

Before installation the local power grid specification should be compared with that of the device (see type label).

Connect the device only in case of compliance!

Take note of the security advice!

5.2 Installation and connection

- Unpack the device and remove all packaging material. Remove the protective film from the device.
- Place the device on a flat, safe surface which can withstand the weight of the device.
- **Never** place the device on an inflammable surface.
- **Never** place the unit in wet or moist area.

Technical Data(for RH)

- Keep a minimum distance of 20cm from inflammable walls and other objects.
- Do not place the device near open fireplaces, electric heaters, heating stoves or other heat sources.
- Put the intermediate shelf back into the device.
- The power socket circuit must be protected with at least 16A fuse. Connect the device directly to wall outlet. Do not use power strips or multiple sockets.
- Place the device so that the plug is accessible. Thus, the unit can be quickly disconnected from the mains when needed.

5.3 Operation

The device should be operated only by personnel who have been trained in the use of the device.

Preparing the device

- Clean the device after unpacking and before the connection according to the instructions in section 6.2 "Cleaning"
- Clean the GN containers before use.
- Make sure that the device and accessories (intermediate shelf, water tray) are dry before operation
- Put the intermediate shelf inside the device
- Insert the purified water tray without water into the appropriate fixture on the operation side.
- Connect the unit to a suitable single socket with earthing.
- Turn on the device with the **ON/OFF** toggle switch.

Warming up and keeping the food warm

- Set the desired temperature for each food type in the range from 30 °C to 90 °C by means of a temperature control knob provided on the device.
- Warm up the counter without water in the water tray and without food to the set temperature. The glass will be preheated too. This process prevents water condensation on the glass, when the food is put in the counter.
- The orange warm-up control lamp located next to the temperature control knob lights up. Once the set temperature is reached, the heater turns off and the orange warm-up control lamp goes out.
- Now fill the water tray with water, if necessary. The water tray serves for production of moisture in the counter (it is especially important for pastries, so they do not dry out so fast).

Technical Data(for RH)

GB

**Pour only so much water that it does not spill over.
Observe water level in the water tray, refill water if necessary.**

Before you fill the counter with the desired food, make sure that the set operating temperature is reached.

- In the meantime, prepare the desired hot food and put in the appropriate max. 40mm deep 2/1 GN containers (GN containers not included).
- Open the sliding glass door of the counter into the opening provided at the bottom of the counter. Foods, such as pastries, prepared small portions, etc. can be put into suitable containers or plates, serving platters and placed on the intermediate shelf.

Do not put food directly on the bottom shelf or intermediate shelf, use appropriate containers or dishes!

- Close the glass sliding doors of the counter to reduce the temperature loss in the counter. The food is kept warm at the set temperature.
- By reduction of temperature in the counter, the heating is switched on again and the warm-up control lamp comes on again.



WARNING! Hot surface!

During operation some parts of the device become very hot.

To avoid burns, do not touch them with bare hands. Use gloves or potholders to insert or remove hot food.

- The device is equipped with power socket for other electrical devices (such as a knife or lamp). This is located next to the power cord on the control panel of the device. When connecting additional devices bear in mind that the total output of 3500 Watts(including equipment) should not be exceeded.
- If the device is not in use anymore, turn it off by ON/OFF toggle switch. Disconnect the device from the power supply (pull the plug).

Switching ON/OFF the interior lighting

- The device is equipped with halogen lighting. Switch this on or off as required with the provided toggle switch on the operation side.

6. Cleaning and maintenance

6.1 Safety advice

- Before beginning with repair or cleaning works make sure the device has been disconnected from power supply and has cooled down.

Do not use any acid agents and make sure no water ingresses the device.

To protect yourself from electric shock, never immerse the device, its cables and the plug in water or other liquids.

The device is not suited for direct washing via water jets.

Therefore, you must not use any kind of pressure water jet for cleaning the device!

6.2 Cleaning

- Clean the equipment regularly at the end of the day, during the day if necessary, or when it is no longer in use.
- Disconnect the device from power supply (pull the plug!) and let it cool down before you start cleaning.

Technical Data(for RH)

- Open the glass sliding doors, remove all food products from the counter and store them in the refrigerator to prevent spoiling.
- For easy cleaning of the device, the sliding glass doors can be removed by lifting them up slightly and pulling out.
- Remove the intermediate shelf from the counter. Slide the water tray out of the device. Clean the glass sliding doors, the intermediate shelf and water tray with warm water and mild detergent. Afterwards, rinse the cleaned parts with clear water and dry them thoroughly.
- If there are scale deposits in the water tray, remove them regularly with the use of conventional agents. To reduce scale formation, use filtered water, if possible!
- Clean the counter regularly from inside with a disinfectant cleaner suitable for the food industry and a soft cloth. Rinse with clear water and dry the cleaned areas thoroughly.
- Put the intermediate shelf into the counter and then fasten the glass sliding doors to the device again. Insert the water tray back into the fixture designed for this purpose.
- Rinse the lateral and front exterior surfaces of the device with a soft cloth dampened with warm water and mild detergent.
- Clean carefully the used GN containers.
- Never use abrasive cleaners, such as scouring powder, alcohol-based agents, thinners, which can damage the surface of the device.

If the device is not used for an extended period:

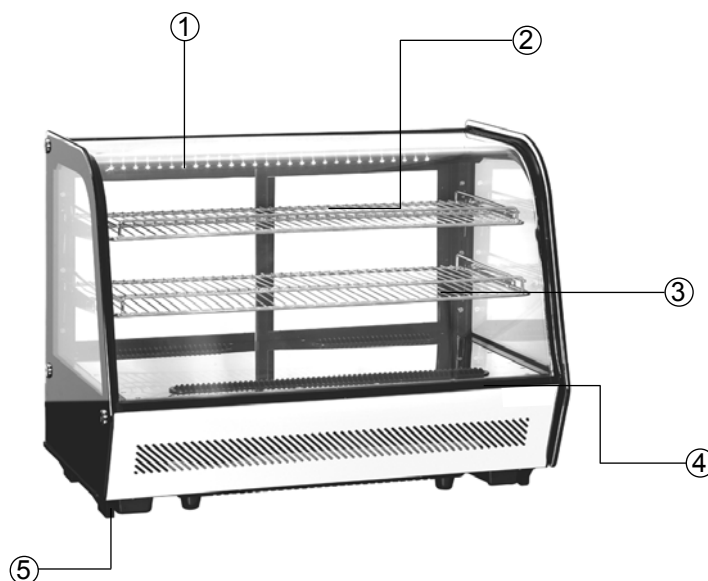
- Turn off the device by means of ON-/OFF toggle switch, moving it to "0" position and unplug the power plug from the socket;
- Remove all food from the counter;
- Clean the device inside and out, as described above;
- Clean the device with clear water and dry it thoroughly;
- You can open the sliding glass doors so that the device dries out completely.

6.3 Safety instructions for maintenance

- Inspect the power cable regularly for damage. Never use the device if the cable is damaged. If the power cable is damaged, have an authorised service center or qualified electrician replace it.
- In case of damage or malfunction, please contact your stockist or our customer service centre.
- Only a qualified technician and using original spare parts and accessories should carry out repairs and maintenance of the device. Do not attempt to repair the device yourself.

Technical Data(for RC)

4.1 Overview of parts



① LED lighting

The LED lighting is located in the upper part of the refrigerated showcase and may be turned on or off as needed.

② Sliding glass doors

Glass doors at rear allow for easy access to products

③ Shelves

Flexibility in placement of shelves allows the storage of items of various dimensions in the refrigerated showcase . Brackets are pre-mounted. The shelves may be placed on the brackets at the desired height.

④ Air vent

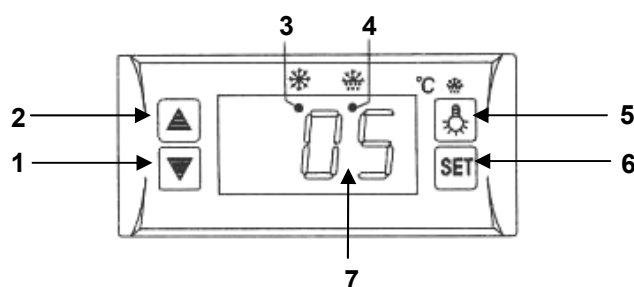
Allows for outflows of air from refrigerated showcase. The vent must remain uncovered at all times.

⑤ Air intake

Here, circulating air is taken into the refrigerated showcase. The intake must remain uncovered at all times.

Digital temperature regulator

The temperature regulator is located at the back of the unit.



Technical Data(for RC)

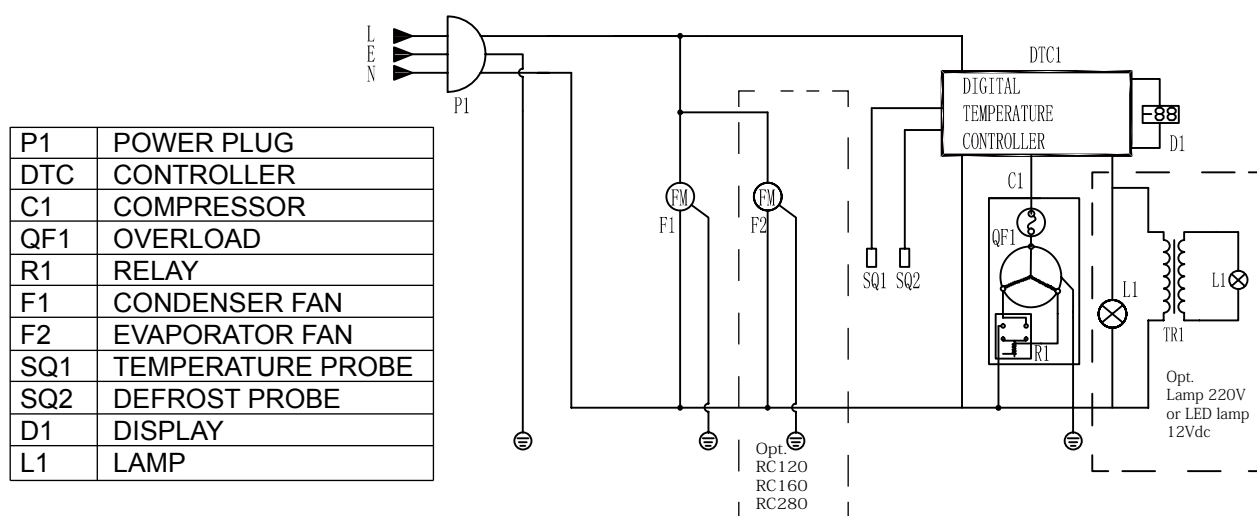
1. **Lower** temperature
2. **Raise** temperature
3. LCD compressor indicator
4. LCD defrost indicator
5. LED activation
6. Information / memory set button
7. Temperature indicator

4.2 Technical specification

Model	RC 100	RC 120	RC 160
Climate Class	4	4	4
Temp. range	1-12 °C	1-12 °C	1-12 °C
Refrigerant gas	R600a	R600a	R600a
Input power	160W	230W	230W
Rated current	1.3A	1.5A	1.5A
Rated frequency	50Hz	50Hz	50Hz
Rated voltage	220-240V	220-240V	220-240V
External dimension	682x450x675	696x568x686	874x568x686
Net capacity	100L	120L	160L
Net/Gross weight	39/42Kg	64/66Kg	71/73Kg

We reserve the right to make technical changes!

4.3 Circuit Diagram



Technical Data(for RC)

GB

5. Installation and operation

5.1 Safety instructions



WARNING!Electrical hazard!

The device must only be connected to properly installed single socket with protective contact.

Never yank cord to disconnect from outlet.

Cable must not touch any hot parts.

- See that the cable does not touch any heat sources or sharp edges. Do not let the cable dangle over the counter edge.
- Do not use the device in case it does not function properly, has been damaged or dropped.
- Do not use any accessory or spare parts that have not been recommended by the manufacturer. These can be dangerous for the user or lead to damages of the device or personal injury, and further, the warranty expires.
- Do not lay the cable over carpets or heat insulations. Do not cover the cable. Keep away the cable from operating range and do not dunk it into water.
- Do not move or tilt the device when in operation.



WARNING!Electrical hazard!

The device can cause injuries due to improper installation!

Before installation the local power grid specification should be compared with that of the device (see type label).

Connect the device only in case of compliance!

Take note of the security advice!

5.2 Installation and connection

The installation and maintenance of the appliance should only be carried out by trained personnel!

Technical Data(for RC)

GB

- Discard the complete packing material after unpacking the device.
- Place the device on top of an even and safe surface which supports the weight of the device.
- Not at any time should you place the device on an inflammable surface (such as: table cloth, carpet, etc.).
- Do not place the unit in the vicinity of open sources of fire, electric cookers, furnaces or other sources of heat such as e.g., in places exposed to direct sunlight. The heat can damage the surface of the unit, as well as have a negative effect on the cooling power and increase the consumption of energy.
- In order to avoid compressor errors, do not tilt the unit above 45° during its placement or transport.
- The unit should be placed in a manner that assures the proper circulation of air in order to guarantee the cooling properties of the unit. A minimum space of 10 cm from walls and other objects should be maintained.
- Do not place the unit in locations with high air humidity or high temperatures, because these factors can damage the unit.
- Before the first use the unit should stand for at least 2 hours before it is connected to the power source.
- The electrical circuit in the socket must be secured to at least 16A. Only connect the unit directly to the wall socket; do not use any extension cords or power strips.
- Position the device in a way so that the power plug is always accessible.

5.3 Operating

- Prior to first use, clean the unit.
- Wash the shelves in warm water and a mild cleaning agent prior to placing in the refrigerated showcase .
- Clean the interior and exterior of the unit with a moist, soft cloth. Dry thoroughly.
- Insert the plug into a grounded single outlet.
- Beverages and food products may be placed in the refrigerated showcase after it has reached the desired temperature.

Setting the temperature

- The optimal temperature has been set at the factory and is between 2°C and 6 °C. These settings are appropriate for a working temperature in the refrigerated showcase between 2° – 12°C.



The factory settings may not be changed by the user!

- The temperature indicated on the display is the temperature around the thermometer.
- If the user desires to change the factory settings, it is necessary to contact a customer service agent.

Technical Data(for RC)

GB

Lighting

- The unit is equipped with an LED lighting strip.
- To turn on the refrigerated showcase lighting, press „  “ for one second. Pressing „  “ a second time will turn off the lighting.

LCD indicators



LCD compressor indicator:

The indicator comes on during cooling, remains off when the refrigerated showcase temperature is stable, and blinks when the compressor has been turned off for too long.





LCD defrost indicator:

The indicator comes on during the defrost process, goes off when the defrost process finishes, and blinks when the unit has gone too long without defrosting.

Automatic defrost

The unit is automatically defrosted 4 times per 24-hour period.

Manual defrost

If the refrigerated showcase 's performance begins to decline, for such as following a long period with the doors being kept open, manual defrost must be performed. Press and hold „  “ for 6 seconds to begin defrosting. The „  “ indicator will come on.

Indications for the user

- To minimize loss of cold, keep the sliding doors open for as short of a time as possible. They should also be opened as rarely as possible.
- Do not cover the air intake and air vent. Air must circulate freely to ensure proper cooling.
- Food products placed in the refrigerated showcase must have sufficient spacing. Too little space reduces cooling effectiveness.
- The height of shelves should be appropriate to the dimensions of food products.
- Warm dishes should be cooled to room temperature prior to placing in the refrigerated showcase .
- In case of a power failure, avoid opening the sliding doors if possible in order to prevent loss of cool.
- Following a power outage or removal of plug, leave the unit disconnected from electricity for a minimum of 5 minutes.

Technical Data(for RC)**WARNING! Risk of burns!**

When in use, the surface of the compressor may be not. Do not touch it with bare hands.

6. Cleaning and maintenance**6.1 Safety advice**

- Before beginning with repair or cleaning works make sure the device has been disconnected from power socket (pull the power plug!!!) and has cooled down.
- Do not use any acid agents and make sure no water ingresses the device.
- To protect yourself from electric shock, never immerse the device, its cables and the plug in water or other liquids.

The device is not suited for direct washing via water jets. Therefore, you must not use any kind of pressure water jet for cleaning the device!

6.2 Cleaning

- Clean the refrigerated showcase regularly.
- Remove the shelves, wash with a mild cleaning agent and wipe with a soft cloth.
- Clean the interior and exterior of the refrigerated showcase with warm water, a moist cloth and mild cleaning agent.
- Rinse in clean water.
- Never use harsh cleaning agents, such as scouring powders, alcohol-based substances, or solvents which may damage plastic elements and/or the paint's coating.
- Following cleaning, use a soft, dry cloth to dry and polish the external surface.

If the refrigerated showcase is not used for a significant time:

- Remove the plug from its socket;
- Remove all food and beverages from the refrigerated showcase ;
- Clean the interior and exterior of the refrigerated showcase ;
- Leave the sliding glass doors open to allow the refrigerated showcase to dry.

6.3 Safety instructions for maintenance

- Check the mains connection cable for damage from time to time. Never operate the device when the cable is damaged. A damaged cable must immediately be replaced by customer service or a qualified electrician to avoid dangers.
- In case of damage or malfunction, please contact your stockist or our customer service centre.
- Only a qualified technician and using original spare parts and accessories should carry out repairs and maintenance of the device. Do not attempt to repair the device yourself.

Technical Data(for RC)

GB

7. Troubleshooting

Problem	Cause	Solution
Insufficient cooling	<ul style="list-style-type: none"> • Direct sunlight or heat source nearby. • Poor air circulation around the refrigerated showcase • Doors not fully closed or opened for too long. • Seals on doors damaged or deformed. • Spacing between products too small or too many products in refrigerated showcase . • Air intake and/or vent covered. 	<ul style="list-style-type: none"> • Direct sunlight or heat source nearby. • Poor air circulation around the refrigerated showcase • Doors not fully closed or opened for too long. • Seals on doors damaged or deformed. • Spacing between products too small or too many products in refrigerated showcase . • Air intake and/or vent covered.
No cooling	<ul style="list-style-type: none"> • Plug not in socket. • Circuit failure. • Lack of electricity • Damaged temperature regulator. 	<ul style="list-style-type: none"> • Insert plug properly. • Check power source. • Check power source. • Contact sales agent.
Functions loudly	<ul style="list-style-type: none"> • Refrigerated showcase is placed on uneven surface. • Refrigerated showcase is touching a wall or other object. 	<ul style="list-style-type: none"> • Place on level surface. • Ensure proper distance to wall or other objects.
Compressor fails to turn off automatically	<ul style="list-style-type: none"> • Refrigerated showcase too full. • Sliding glass doors have been open too long. 	<ul style="list-style-type: none"> • Remove excess product. • Limit time doors are open.

The above described problem cases are given for orientation and as examples. Should these or similar problems occur, please turn off the machine immediately and don't use it anymore. In order to check and repair your machine, please contact a qualified expert or the manufacturer immediately.

Messages about errors appearing on the display

Message	Description of the error	Results	Help
"HH"	Overheating (above 45°C) or short-circuit of the room temperature sensor	The compressor turns the unit on for 45 minutes, and then turns the unit off for 15 minutes	Contact the salesman
"LL"	Too low temperature Open circuit (lack of connection with the room temperature sensor)	The compressor turns the unit on for 45 minutes, and then turns the unit off for 15 minutes	Contact the salesman

Waste Disposal

Discarding old devices

At the end of its service life the discarded device has to be disposed in accordance with the national regulations. It is advisable to contact a company which is specialized in waste disposal, or just contact the local disposal service in your community.



WARNING!

To exclude any abuse and the dangers involved make the waste device unfit for use before disposal. For that purpose disconnect device from mains supply and remove mains connection cable from the device.



For the disposal of the device please consider and act according to the national and local rules and regulations.