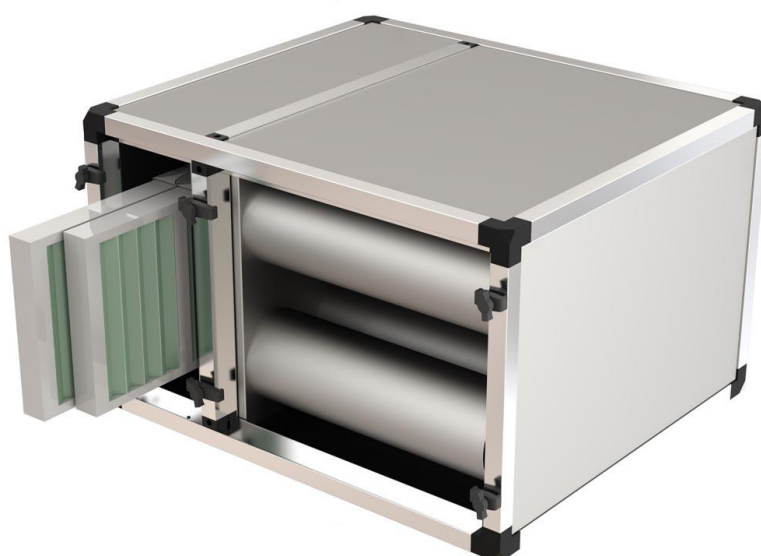




**AIR CLEANER MODEL
FBK-2500/7223.0520**





Carbon filter cabinet consisting of 2 parts:

1. Carbon cartridge holder: For de-odoring polluted air.
2. Cassette filter holder: For filtering dust particles in polluted air.

The Odor / carbon filter cabinet is manufactured in accordance with CE guidelines and is equipped with an inspection hatch so that it is easy to clean.

Product number:	FBK-2500/7223.0520
Number of Carbon cartridges:	10 pieces
Carbon cartridges dimensions in mm:	(Ø)145 (L)400
Flow Rate Carbon filter:	150m³/h
Resistance Carbon filters in Pa:	90(Pa)
Number of Cassette filters:	2 piece
2x Cassette filters dimensions in mm:	(W)592x(D)45x(H)289
Flow Cassette filters (592x595):	1700 m³/h
Resistance Cassette filter in Pa:	250 (Pa)
Profile frame:	Aluminium
Panel construction:	Galvanised steel



Cassette Panel filters are pleated filters that are assembled in a moisture-resistant cardboard frame. The synthetic filter medium is progressively constructed, which guarantees high dust capture yields. This technique guarantees lower air resistance, which leads to lower energy consumption.

Advantages cassette filters: Advantages general:

- Large filter surface
- Fully combustible
- High dust absorption capacity
- Long stand time
- Low energy consumption
- Dimensions in accordance with EN15805
- Moisture-resistant cardboard frame
- Easy assembly
- Fully combustible

Technical specifications

:Application:	Pre-filter HVAC, industry, spray booths
Frame:	Very sturdy cardboard frame
Type filter:	G4 Bonding:
N/A.Medium:	Synthetic
Gasket:	Optional neoprene
Filter class:	According to ISO 16890: ISO Coarse
Maximum final resistance:	250 Pa
Flow Cassette filter in m ³ /h:	3400m ³ /h
Maximum temperature:	70°C
Maximum relative Humidity:	90%

Installation instructions:

- Make sure the filter is installed correctly: suction side- clean airside
- Filter must be mounted correctly: no leaks
- Gaskets must be undamaged
- Filter must be clamped in four places
- Prevent double sitting of the filter medium
- Prevent damage to the filter during installation
- The system must turn on for several hours to obtain the desired result
- Installation registration of the filters: note date, type, starting resistance.



For filtering odors or harmful gases

Application

CFC filter cartridges have many applications.

The goal is always to rid the air in and / or away of annoying odors or harmful gases.

Some examples where our carbon filter cartridges are successfully applied:

airports, clean rooms, hospitals, data centers, industrial kitchens, museums, archives and offices.

In industry, it is often about getting rid of the exhaust air of harmful gases.

Advantages of carbon filters:

- Refillable
- High absorption capacity
- Easy assembly

Technical specifications:

Application:	Horeca
Frame:	Galvanized steel, plastic and stainless steel 304
Bonding:	N.V.T.
Activated carbon:	Coal based activated carbon (pellets) M-CARB generic activated carbon
Gasket:	Neoprene
Pressure (max):	90(Pa)
Flow rate:	150 m3/h
Maximal final resistance:	N/A
Maximum temperature:	50°C
Maximum relative humidity:	70%



Dimensions in MM (WxDxH):

