

ecofrost

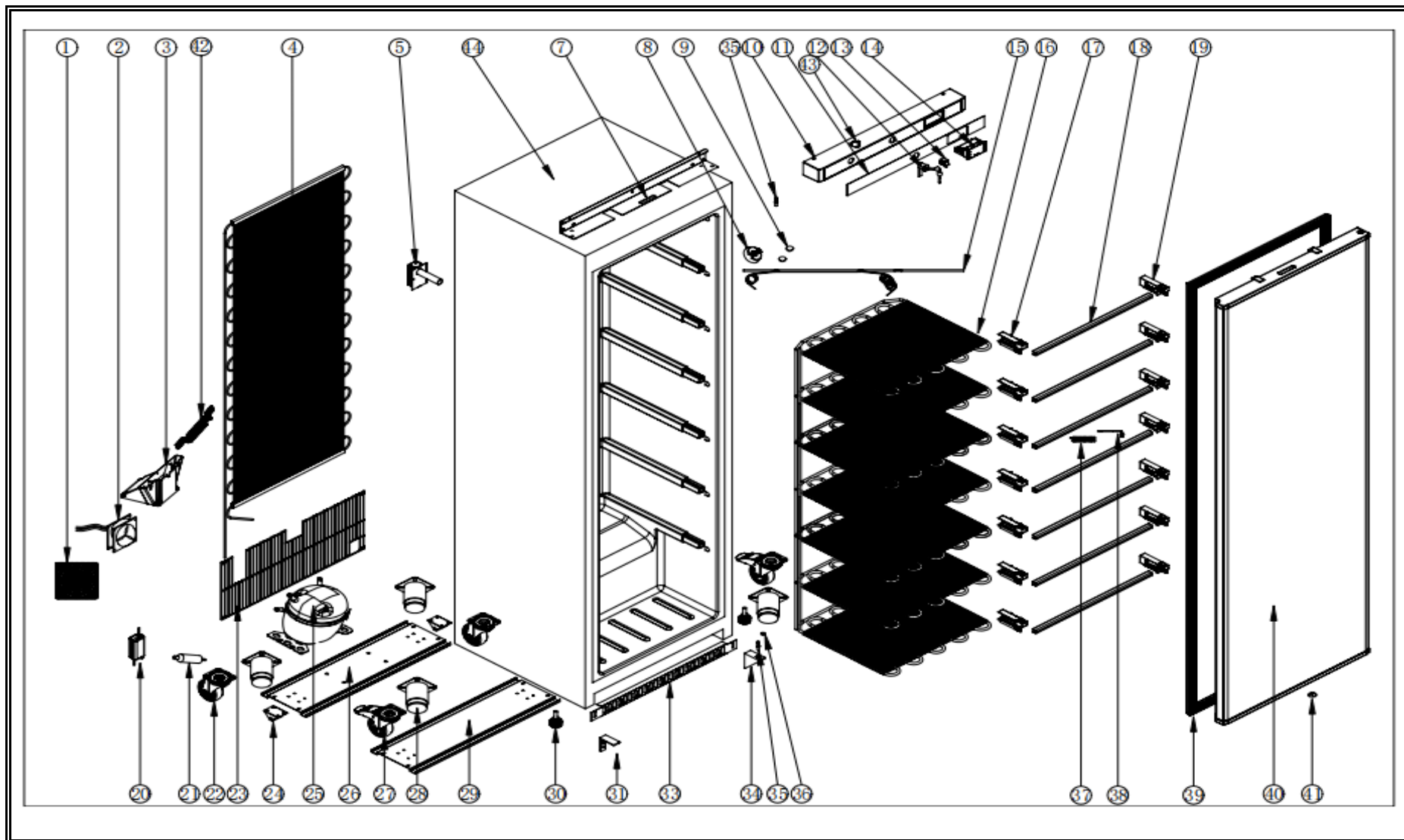
7063.0095

v1.0

Onderdelen informatie
Erzatzteil information
Spare part information
Information de pièces







| POS: | Art.No.: | Omschrijving: | Aantal: |
|------|-------------|---|---------|
| 1 | | Net cover | 1 |
| 2 | CS9338.8032 | Condenser fan | 1 |
| 3 | | Condenser fan cover | 1 |
| 4 | | Condenser | 1 |
| 5 | | air pressure balance valve kit | 1 |
| 7 | | Control panel bracket | 1 |
| 8 | | pressure Balance valve holder | 1 |
| 9 | | cover for pressure Balance valve holder | 2 |
| 10 | CS9338.8046 | Control panel | 1 |
| 11 | CS9338.8046 | Control panel label | 1 |
| 12 | CS9338.8008 | Lock with 2 keys | 1 |
| 13 | CS9338.8066 | Door switch | 1 |
| 14 | CS9338.8064 | Thermostat DT-02 | 1 |
| 15 | | Sunction tube set | 1 |
| 16 | | Freezer evaporator | 1 |
| 17 | | Evaporator holder left | 7 |
| 18 | CS9338.8068 | Strip | 7 |
| 19 | | Evaporator holder right | 7 |
| 20 | CS9338.8036 | Switching power supply | 1 |
| 21 | | Dry filter | 1 |
| 22 | | Big castor(without brake) | 2 |
| 23 | | Engine room grid | 1 |
| 24 | | Rollers | 2 |
| 25 | | Compressor | 1 |
| 26 | | Bottom plate of compressor | 1 |
| 27 | | Big castor(with brake) | 2 |
| 28 | | 201# SS feet | 4 |
| 29 | | Bottom plate | 1 |
| 30 | CS9338.8006 | Feet | 2 |
| 31 | CS9338.8048 | Door support for SS unit | 1 |
| 31 | CS9338.8042 | Door support for white unit | 1 |
| 33 | CS9338.8056 | Bottom panel-white | 1 |
| 33 | CS9338.8054 | Bottom panel-SS | 1 |
| 34 | CS9338.8044 | Right down hinge | 1 |
| 35 | CS9338.8026 | Hinge axis/pivot | 2 |
| 36 | CS9338.8022 | Nylon washer | 1 |
| 37 | | Probe fixing cover | 1 |
| 38 | CS9338.8014 | Senser/Probe/Thermistor | 1 |
| 39 | CS9338.8030 | Door gasket | 1 |
| 40 | | Foamed door-SS | 1 |
| 40 | | Foamed door- white PCM | 1 |
| 41 | CS9338.8028 | Foaming hole cover for door | 1 |
| 42 | | Air guide net for condenser fan | 1 |
| 43 | CS9338.8012 | Main switch | 1 |



Onderdelenlijst 7063.0095

| POS: | Art.No.: | Omschrijving: | Aantal: |
|------|----------|---------------|---------|
|------|----------|---------------|---------|

The logo for ecofrost features the word "ecofrost" in a bold, blue, sans-serif font. Above the letter "o" in "eco", there is a stylized graphic consisting of a light blue arc and a dark blue four-pointed starburst.

ecofrost

7063.0095

Combisteel BV

Lichtschip 63
3991CP Houten
The Netherlands

+31 (0)30 285 00 90
info@combisteel.com
www.combisteel.com